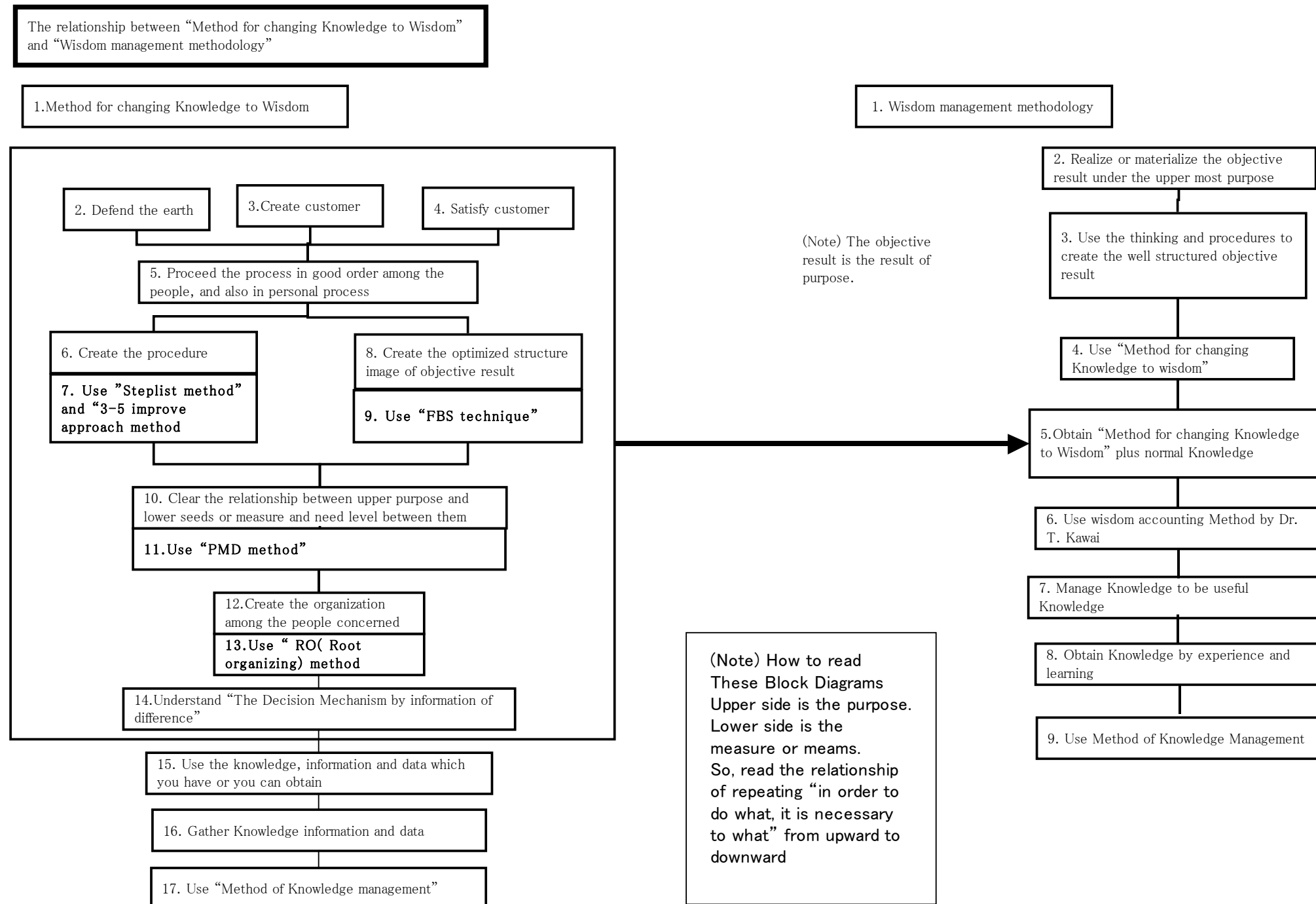


Figure 1. The relationship between “Method for changing Knowledge to Wisdom” and “Wisdom management methodology”



The relationship between “Method for changing Knowledge to Wisdom” and “Wisdom management methodology”

Figure 1 shows the relationship between “Method for changing Knowledge to Wisdom” and “Wisdom management methodology”. In order to read this diagram, you have to read each block from upper to down in the repetition of “In order to do what, it is necessary to do what”.

Figure is divided into two diagram, in order to easily understand the relationship between “Method for changing Knowledge to Wisdom” and “Wisdom management methodology”

“Method for changing Knowledge to Wisdom” is connected to the level of “Obtain “Method for changing Knowledge to Wisdom” plus normal Knowledge” of Purpose measure relationship diagram of “Wisdom management Methodology”.

Left side diagram is consisted of seven methodology of DTCN/DTC method(=Advanced Project management

methodology) which appear in whole contents of Advanced Project Management Methodology.

For more detail, look at URL <http://dten-wisdom.jp/E-edition%201/17-Appendix%20G%20R8.pdf> and <http://dten-wisdom.jp/E-pdf%20entrance.html>